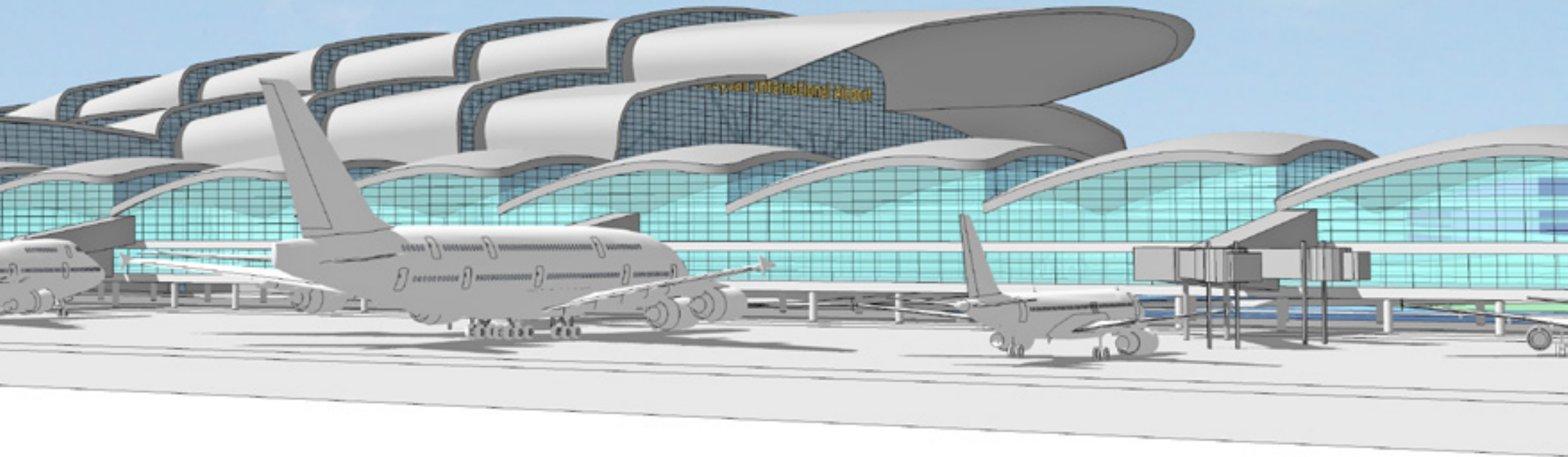
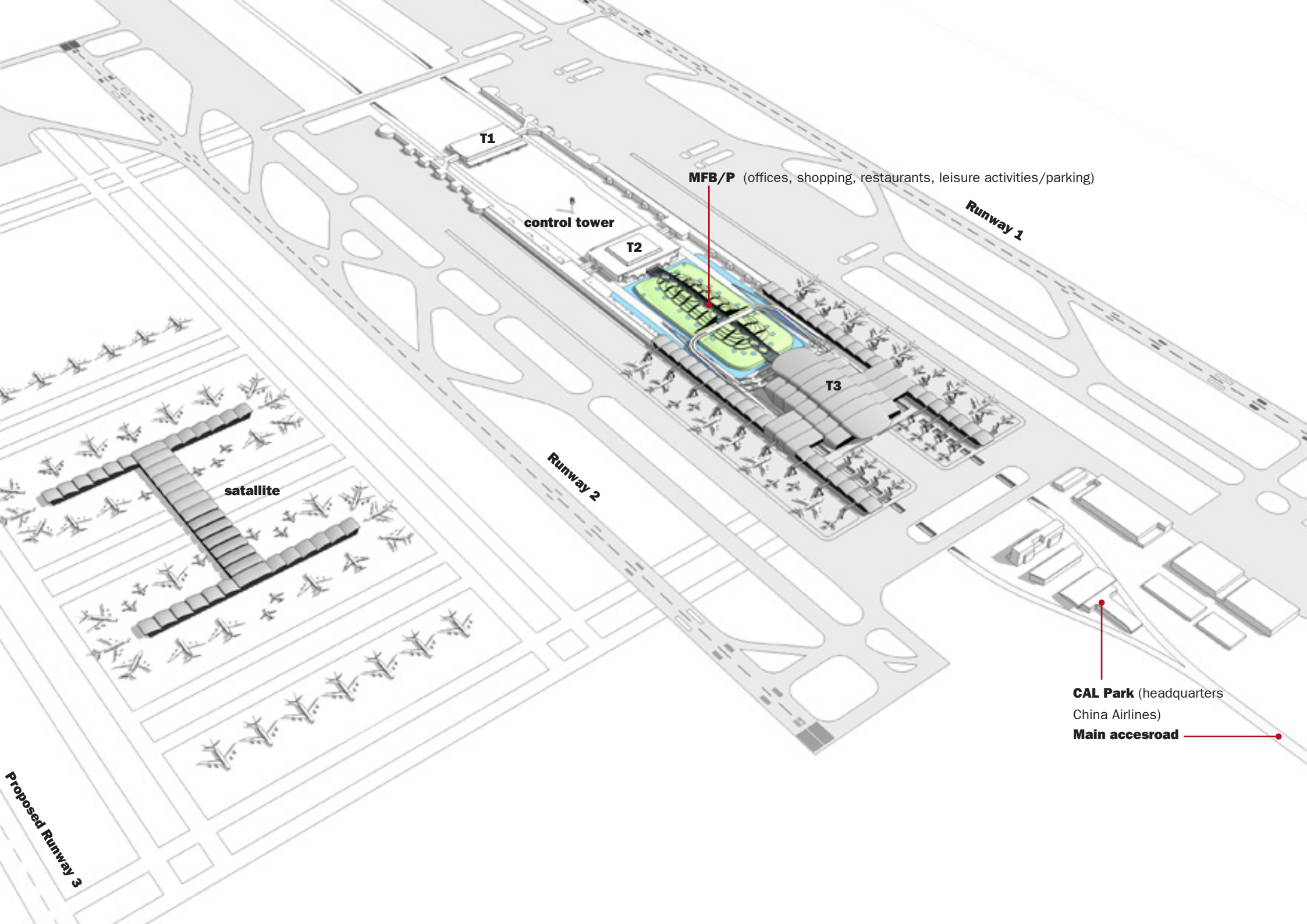


Terminal 3
Taiwan Taoyuan
int. Airport





T1

MFB/P (offices, shopping, restaurants, leisure activities/parking)

control tower

T2

Runway 1

T3

Runway 2

satellite

CAL Park (headquarters
China Airlines)

Main accessroad

Proposed Runway 3

Bid-design

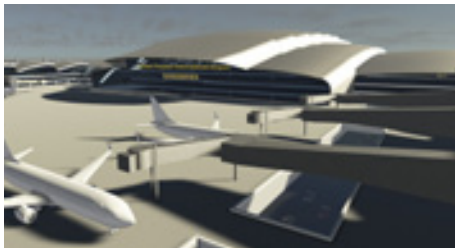
Naco Den Haag invited Ibelings van Tilburg architecten to assist in the esthetic design of Terminal 3 bid for Taiwan Taoyuan International Airport.

Taoyuan airport, positioned near Taiwan's capitol Taipei, is the largest airport of the island.

Growth

Taiwan Taoyuan International Airport currently handles 25 million passengers annually and is preparing for a growth up to 60 million passengers in 2030. In the near future the surrounding Taoyuan region will be developed for commercial, industrial and residential use with a focus on aviation related activities.

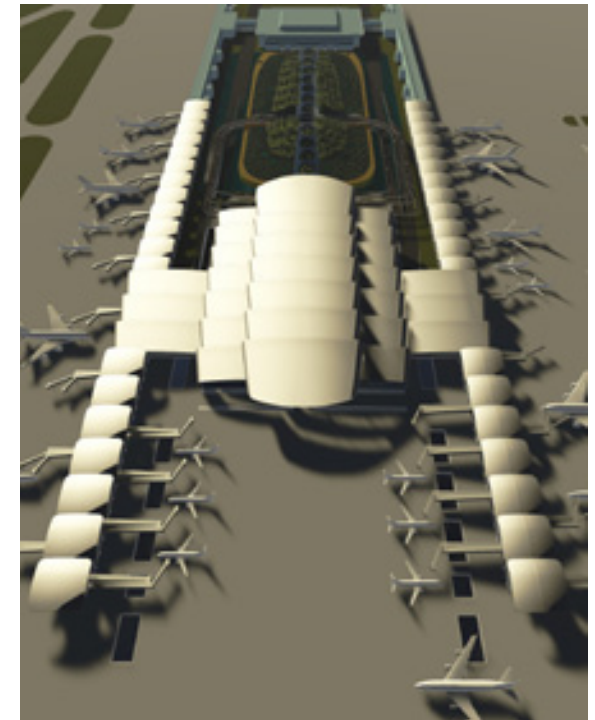
The airport expansion will allow the airport to regain a position as a major aviation hub and become an even stronger driver for the national economy.



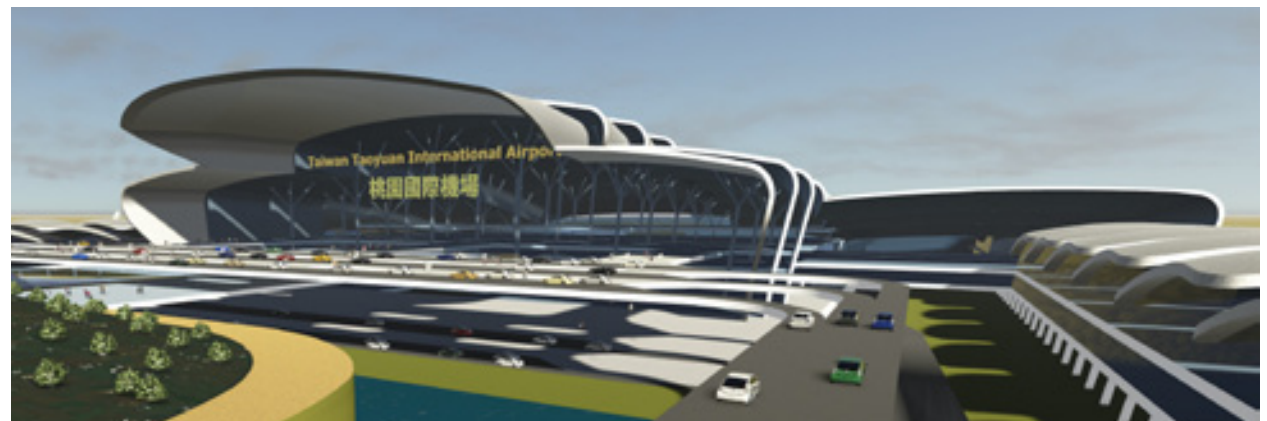
Airside view of Terminal 3



Taiwan



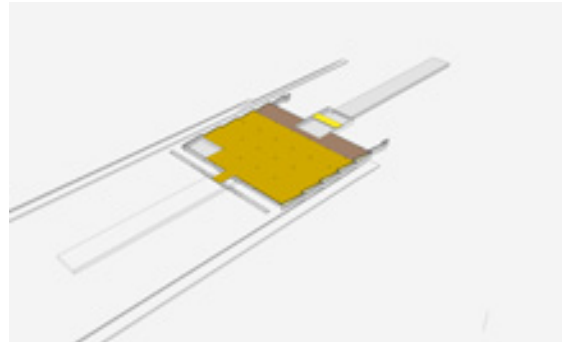
Bird's eye view Terminal 3



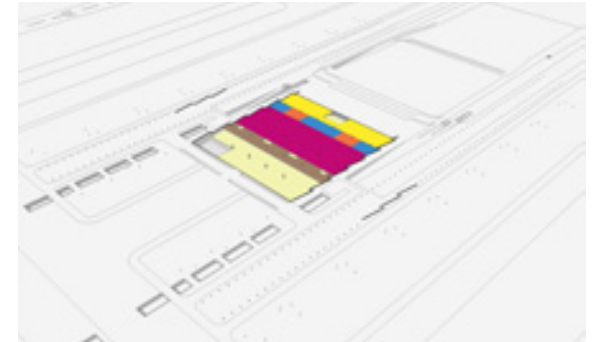
Landside view of Terminal 3, when approaching the terminal by car.

The design consists of two parts; Terminal 3 and the MFB (multiple function building). Terminal 3 has two concourses with a main volume, the processor, connecting them.

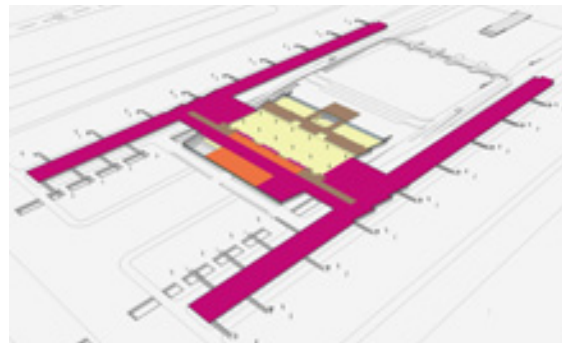
The new Terminal 3 will be connected with Terminal 2 and the area in between will be developed to accommodate a ground transportation centre, parking and commercial real estate. Both terminals will have stations served by the regional light rail system.



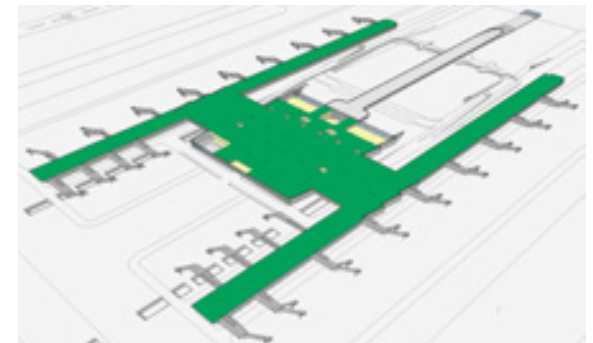
+20000 BHS (Bagage Handling System)



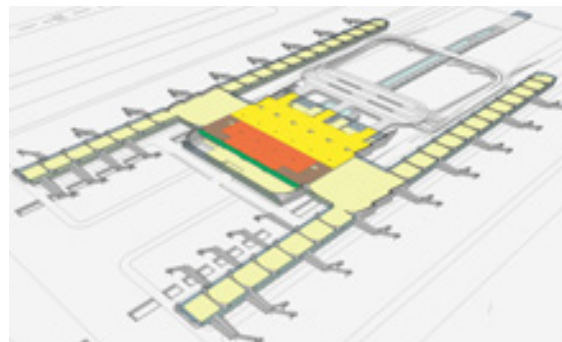
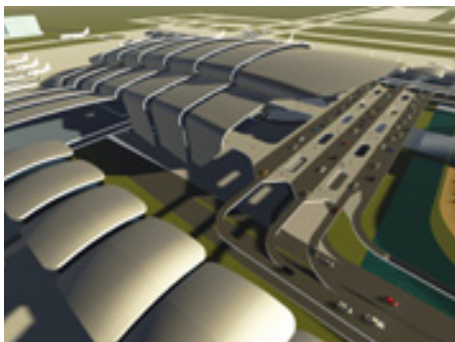
+25000 bagagereclaim and arrivalhall



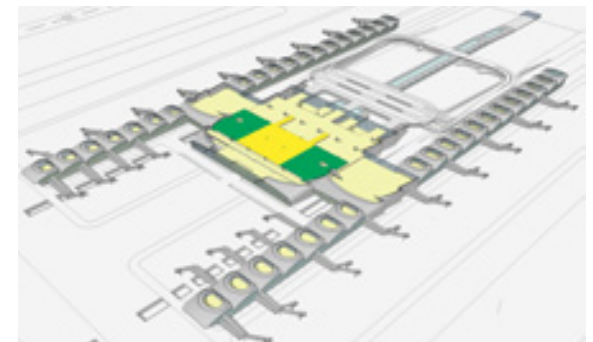
+30000 arrivals



+35000 departures



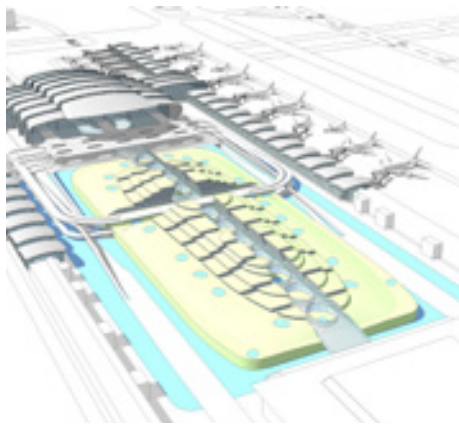
+40000 check-in and pasport-security controll



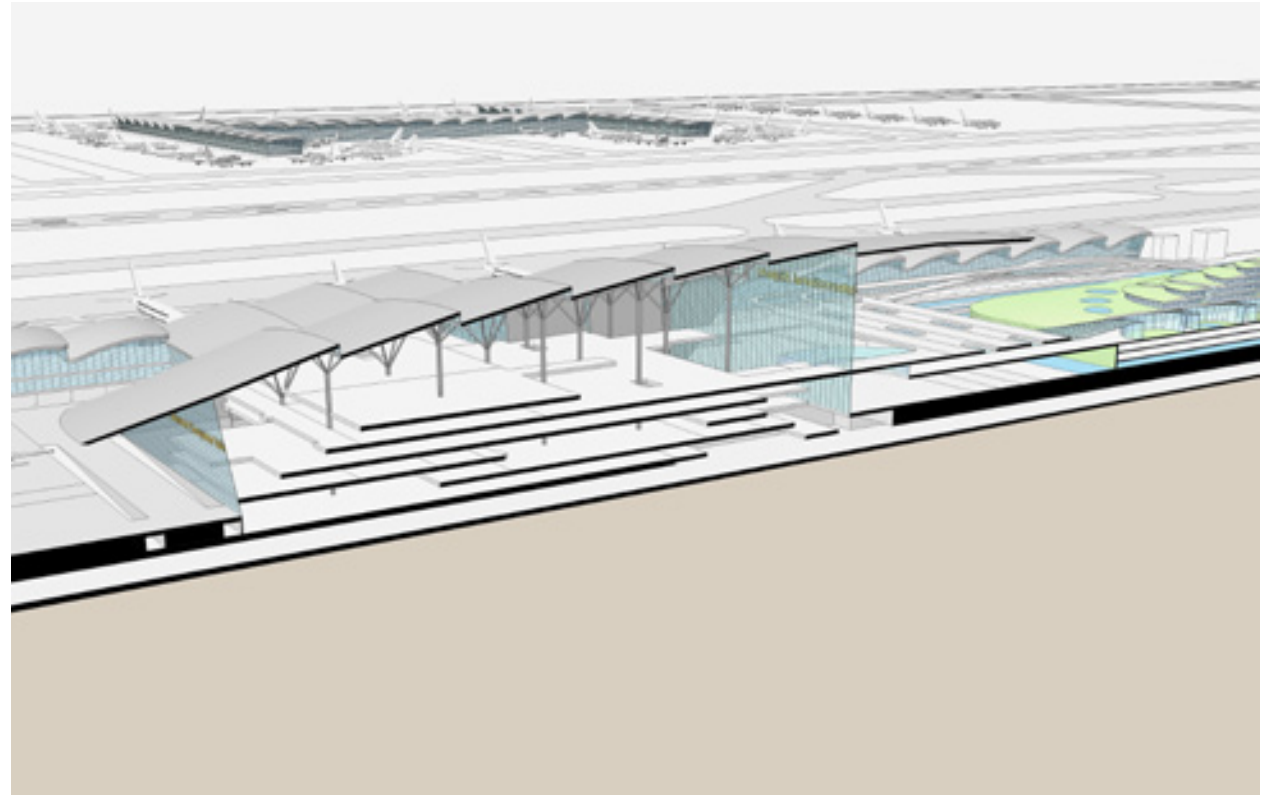
+45000 airlinelounge, landside viewingdeck and F&B

The MFB/P (multiple function building/
Parking) is placed between T3 and T2. It
is shaped as the island of Taiwan.

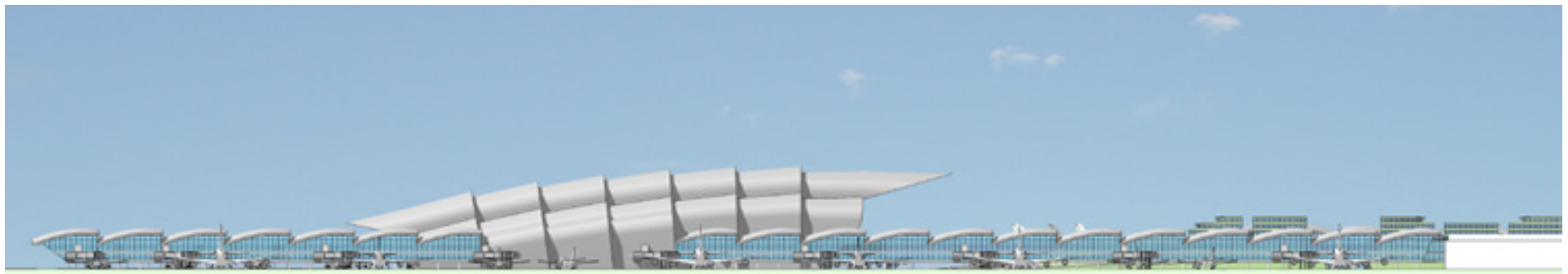
The island-shaped building consists of
Green slopes with a mountain ridge in
the middle.



MFB/P



Section



Side elevation as seen from runway 1

Location:

Taiwan Taoyuan International Airport

Principal:

Taiwan Airport Company (TAC)

Terminal area masterplanning:

NACO, The Hague (The Netherlands)

Programme management:

Parsons Brickerhoff, New York city (USA)

Local engineering and site management:

T.Y. Lin International, San Fransisco (USA)

Design:

NACO, The Hague (The Netherlands)

Esthetic design:

ir. Marc Ibelings BNA

ir. Tim Schuijt

Start basic design:

2013

Gross floor area:

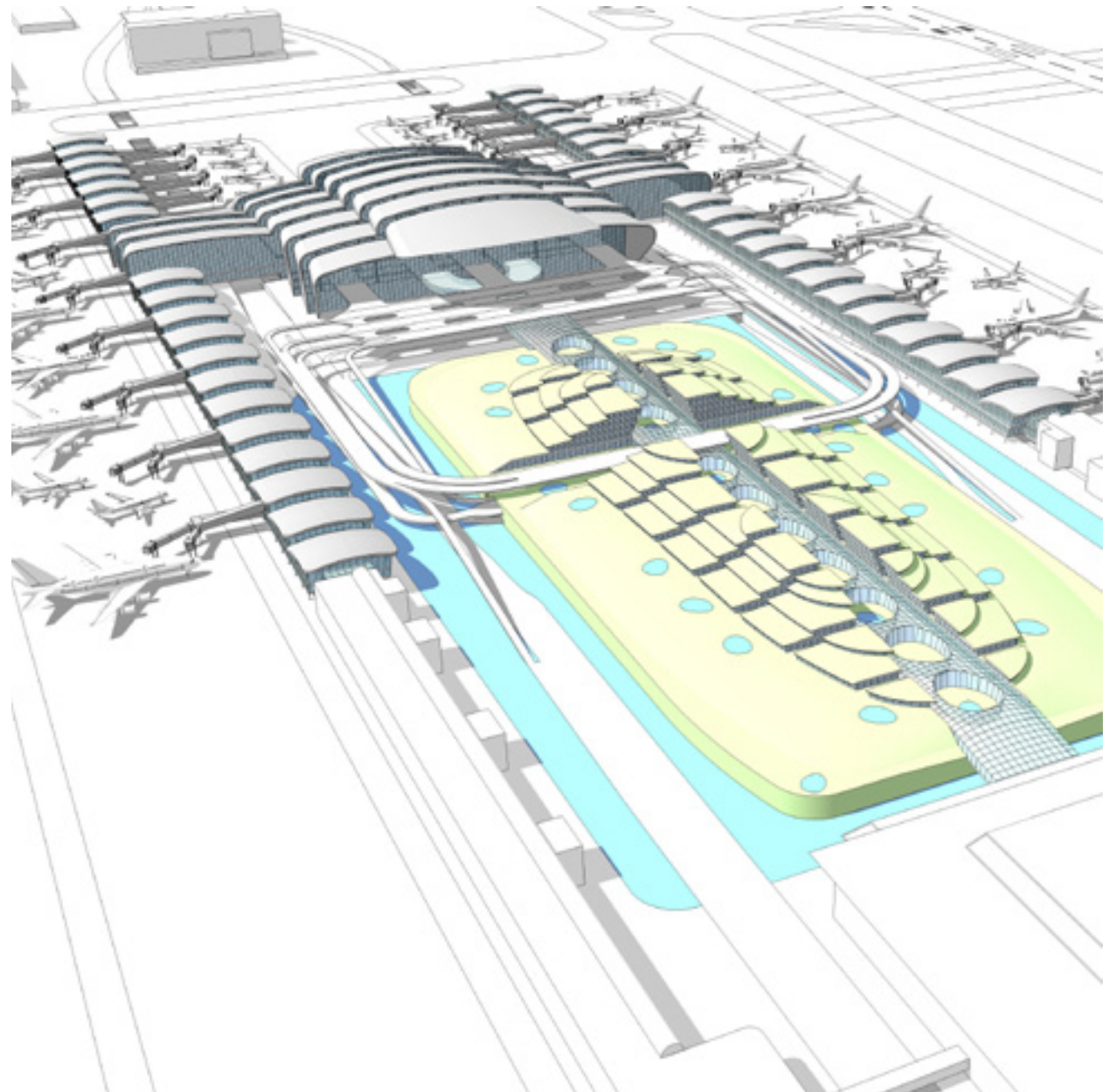
400000m²

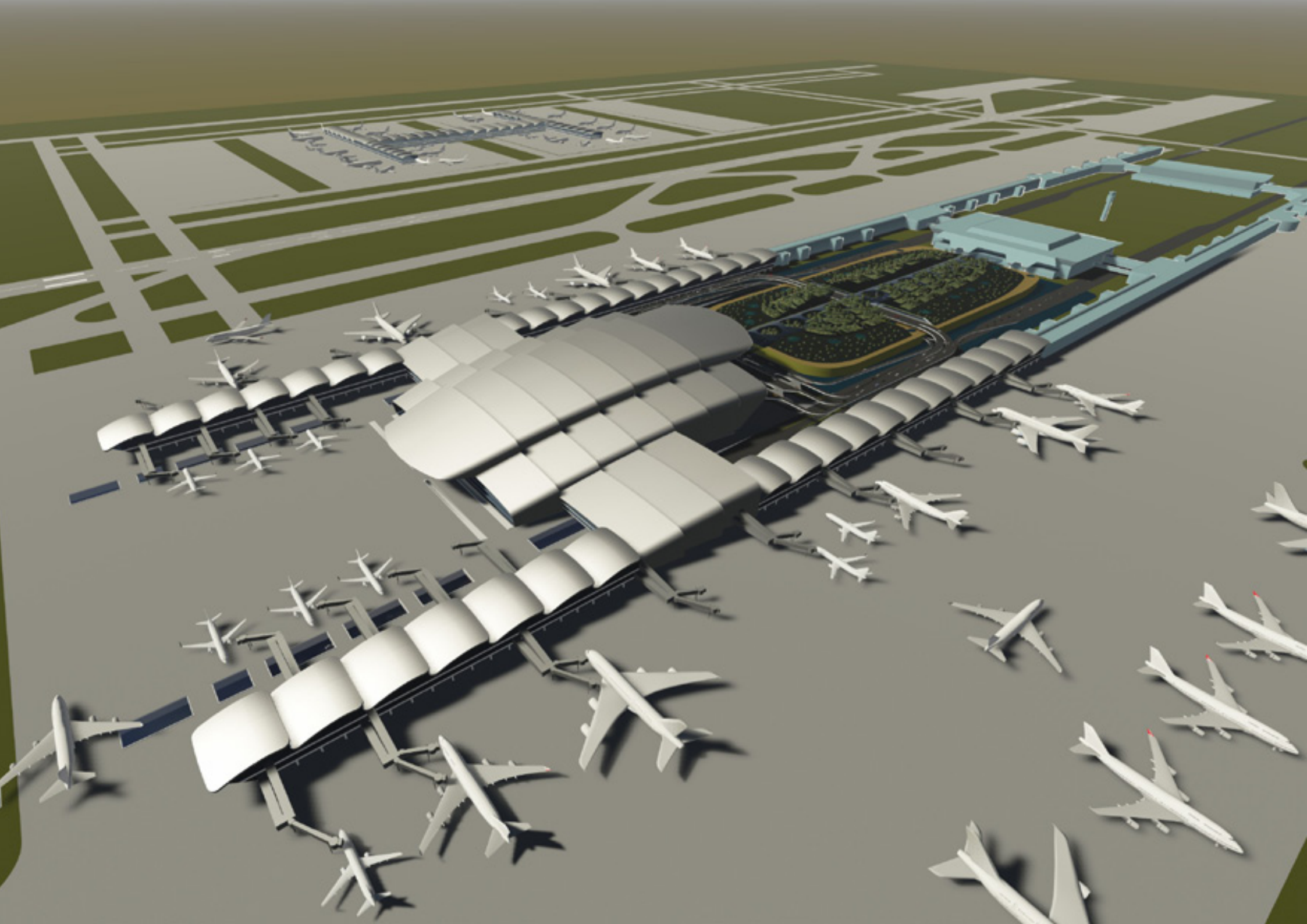
Direct investment:

1.25 billion euros

Projectnumber:

1771





www.ibelingsvantilburg.nl